

# Butterfly

## Change Request System

**HANSKY**  
Help Better Software



### Butterfly can help you:

- Managing Changes in Software Development
- Effective Project Management
- Total Support for Process Improvement
- Powerful Supporting Platform
- Excellent Usability for Successful Implementation

In this tech-exploding, ever competitive market, a software product's quality as well as development time is what makes or breaks it. How does a development team efficiently and systematically resolve existing change requests, forecast potential ones, and at the same time, guarantee the quality and timeliness of a project? The answer is Butterfly Change Request System.

Hansky Butterfly provides an out-of-box yet customizable Software Change Management solution, which is aimed to help software development teams to properly manage and track the ever-present changes in the development process. Moreover, Butterfly is built on an open architecture and equips with a powerful solution design tool – Butterfly Designer. It allows experienced customers or system integrators to build comprehensive solutions that are fit for various business requirements, and achieve continuous process improvement.

## Managing Changes in Software Development

The Butterfly out-of-box solution "Software Change Management System" is a complete and ready to use change management system for software development teams. It translates software change management principles and best practices into four well-defined workflows, including project plan tracking process, RFE process, defect tracking process, and timesheet management process.

### ● Project Plan Tracking

In Butterfly, you can create the task plan through web browser interface, or import them from a Microsoft Project plan file, assign the tasks to appropriate resources, track the project plan status, and adjust the plan during the development.

Task	Complete(%)	Status	Owner	Planned Start	Planned Stop	Actual Start	Actual Stop
Initiation Phase	100.0	Closed	neil	2005-03-21	2005-04-05	2005-03-21	2005-04-07
Planning / Design Phase	100.0	Finish	neil	2005-04-07	2005-04-19	2005-04-07	2005-04-20
Development Phase	42.9	In Progress	neil	2005-04-20	2005-06-14	2005-04-20	
Execution Phase	100.0	Finish	neil	2005-04-20	2005-05-10	2005-04-20	2005-05-13
Bulk Programming	100.0	Finish	neil	2005-04-20	2005-04-26	2005-04-20	2005-04-29
Refinement support	100.0	Finish	neil	2005-04-27	2005-05-03	2005-04-26	2005-05-06
Unit Testing	100.0	Finish	neil	2005-05-04	2005-05-10	2005-05-06	2005-05-13
Executability Quality Assurance	35.4	In Progress	neil	2005-04-20	2005-06-01	2005-04-20	
Write QA Test Plan	100.0	Finish	neil	2005-04-20	2005-04-26	2005-04-20	2005-04-26
Create QA Test suites	100.0	Finish	neil	2005-04-27	2005-05-03	2005-04-27	2005-05-03
Configure QA environment	100.0	Finish	neil	2005-05-04	2005-05-09	2005-05-04	2005-05-11
Usability Testing	0.0	In Progress	neil	2005-05-10	2005-05-17	2005-05-11	
Functionality Test	0.0	Pending	neil	2005-05-16	2005-06-01		
Scalability & Performance Testing	0.0	Pending	neil	2005-05-26	2005-06-10		
Install in production environment	0.0	Pending	neil	2005-05-26	2005-05-27		
Test and tune performance	0.0	Pending	neil	2005-05-30	2005-06-03		
Obtain Performance baselines	0.0	Pending	neil	2005-06-06	2005-06-10		
Final user Review	0.0	Pending	neil	2005-06-13	2005-06-14		
Rollout / Production Phase	0.0	Pending	neil	2005-06-15	2005-06-30		

### ● Request for Enhancement

Butterfly provides a comprehensive stateflow to manage the RFE (request for enhancement) process. It keeps track of the change requests occurred in

the software development through their submission, evaluation, implementation to verification.

### ● Defect Tracking

Defect tracking plays an important role in the software development cycle. It is a key mechanism to ensure the project quality. Butterfly provides an effective defect tracking stateflow that helps the project team to manage the defects found in testing.

### ● Resource utilization

The built-in timesheet management function can be used to keep track of the man-hours put into a project down to the level of each task. This is very helpful for the project manager to calculate the actual cost occurred in the project, and analyze the deviation between the planned cost and the actual spending.

## Effective Project Management

Butterfly can be integrated with various software development management tools to effectively manage changes through out the entire development lifecycle. The integrated system covers planning, requirement, development, testing and maintenance stages, and provides complete traceability.

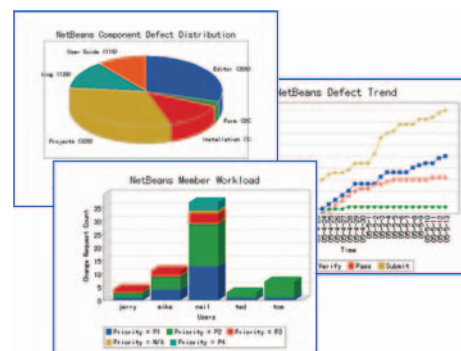
### ● Integrated with popular project management tools

Butterfly can be integrated with Microsoft project, Hansky Firefly Configuration Management system and Mercury TestDirector.

and team productivity. Besides predefine queries and reports, customers can use the Butterfly query builder to retrieve desired data, and generate charts and reports at will.

### ● Rich reports

Project managers can grasp the development progress and overall status through Butterfly queries and reports, and timely adjust the project plan and resource allocation. Butterfly reports can also be used to evaluate the software quality, process efficiency

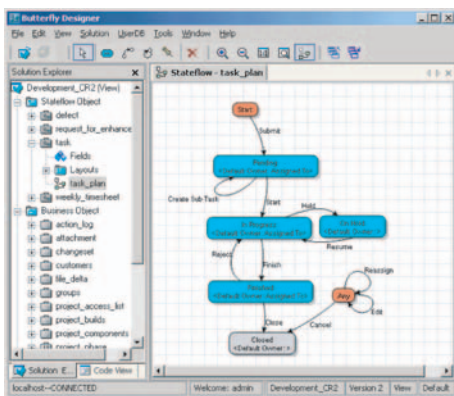


## Total Support for Process Improvement

*Butterfly Change Management system provides a powerful process development environment and fully support continuous process improvement. It allows experienced customers or system integrators to design, test, deploy and upgrade comprehensive process management solutions to meet their business needs.*

### ● GUI Based Solution Design Tool

Butterfly Designer is a GUI based development tool that can be used by the process engineering teams (e.g. SEPG) to design solutions needed for the business.



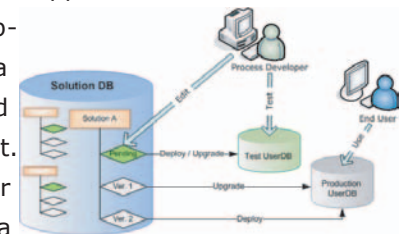
### ● Exclusive Testing Environment

At any time during the course of solution development, the developer can deploy the solution in design to a testing environment and check out the effects of

the design from the end-user's viewpoint. A separated testing environment can ensure the new solution is fully tested before deploying without affecting the production system.

### ● Managing Process Improvement via Solution Versioning

Butterfly Designer supports version control for solution development. To modify a solution, you need to check it out first. Only one developer can check out a solution at a time. After the design and necessary testing is completed, you can check in the solution and generate a new deployable version. Butterfly Designer also provides many useful functions to ease the complexity of designing a solution.



## Powerful Supporting Platform

*Butterfly Server not only supports stateflow modeling and automation, but also provides many essential services for the application level. These built-in services greatly shorten the solution development cycle, as well as provides good extensibility to the platform.*

### ● Role based access control

In Butterfly, roles are defined in the project and are given different access privileges. Project members are assigned to roles and work under the access privileges their roles inherit. Such access controls expand to include even small units like a transition or that transition's fields.

the changes in the system. These methods include transition based notification, and user defined notification and escalation rules.

### ● Notification Engine

Butterfly provides several notification methods to ensure accurate updates and on time responses to

### ● API

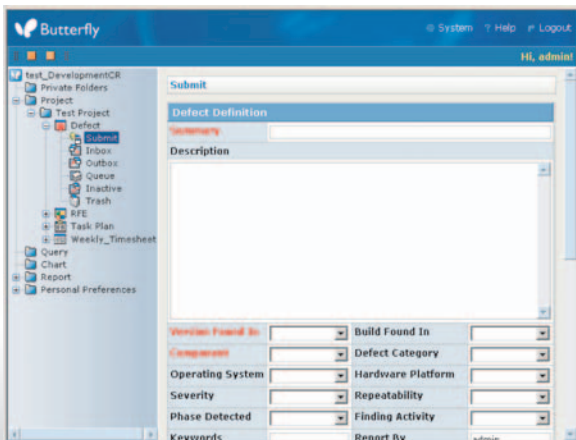
Butterfly API provides full access to the Butterfly database and the stateflow engine. It is possible to write complex scripts to automate the process or manipulate data. Moreover, you can write plug-ins using appropriate technologies (such as JSP) with Butterfly API to provide additional services.

## Excellent Usability for Successful Implementation

The excellent usability of the Butterfly system greatly reduces the difficulties when end users are learning the system and makes it easy to enforce the standard processes. It provides good accessibility for both technical and non-technical users.

### ● Easy to Use Web UI

Butterfly system uses common Web browsers as the end-user client interface and adopts friendly Inbox/Outbox-like structure to organize the change requests and coordinate the stateflow transitions. A user can check tasks assigned to him/her in his/her own Inbox, and process them accordingly.



### ● Personalize to suit individual needs

Butterfly supports Web UI customization to different needs. Admin can define different Web UI templates for users performing different roles. A Web UI template defines the contents displayed in the Butterfly Web, including the menu tree structure (hiding, showing, and ordering of nodes), shortcut buttons, main page content, etc. With Web UI templates, users in different roles can browse and navigate the Butterfly web more conveniently and efficiently.

A user can further adjust the web UI to suit his own needs, and use private folders to store and organize contents of interests.

## System Requirements

### ● Butterfly Server

#### OS

Windows 2000 , Windows XP , Windows 2003  
Solaris  
Linux  
HP-UX  
AIX

#### Hardware

CPU: Intel Pentium 4 , 1GHz+ or equivalent  
Memory: 512 M+  
Program space: 120M  
Hard disk: 2GB+

#### Database

MySQL 4.0 or 4.1  
Oracle 9i  
SQL Server 2000

#### Misc

JDK 1.4.2

### ● Butterfly Client

#### OS

Windows 2000, Windows XP, Windows 2003

#### Hardware

CPU: Intel Pentium 3, 800MHz+ equivalent  
Memory: 256 M+  
Program space: 30M

#### Misc

Microsoft .NET Framework 1.1+  
JRE1.4+